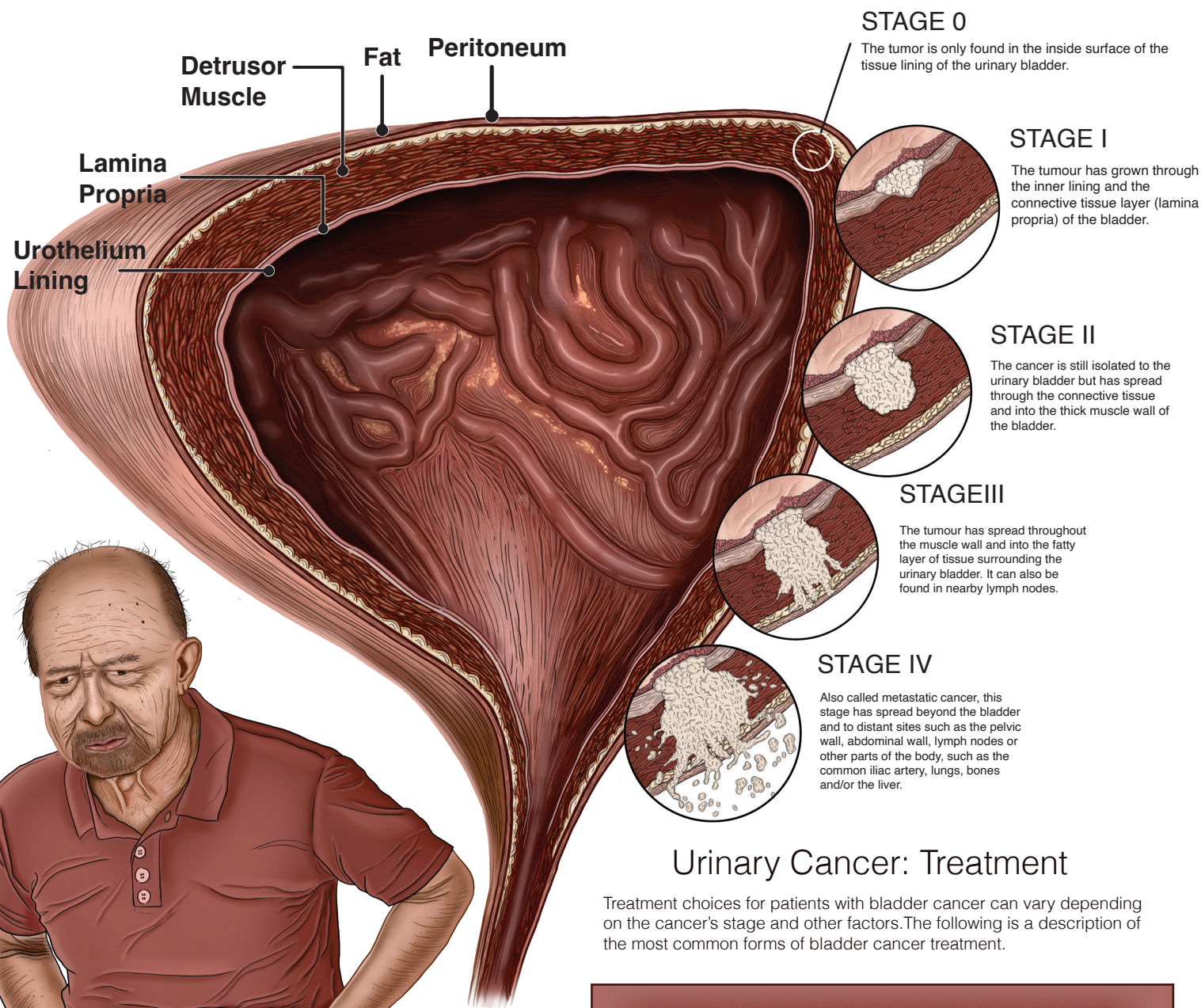


# BLADDER CANCER

Urothelial carcinoma, the most prevalent kind of bladder cancer, originates from the urothelial cells lining the bladder's interior. Common symptoms of bladder cancer include back discomfort, frequent and painful urination, and blood in the urine (hematuria). Additionally, the term "stage" refers to the phase at which a cancer has spread across the muscle wall of the urinary bladder (muscle invasive vs.

non-muscle invasive) and body. Understanding the cancer's stage is vital for selecting the best treatment approach and evaluating its extent. When choosing a cancer treatment plan and estimating the chances of success, the disease's stage is a pivotal factor to consider.



## Urinary Cancer: Treatment

Treatment choices for patients with bladder cancer can vary depending on the cancer's stage and other factors. The following is a description of the most common forms of bladder cancer treatment.

